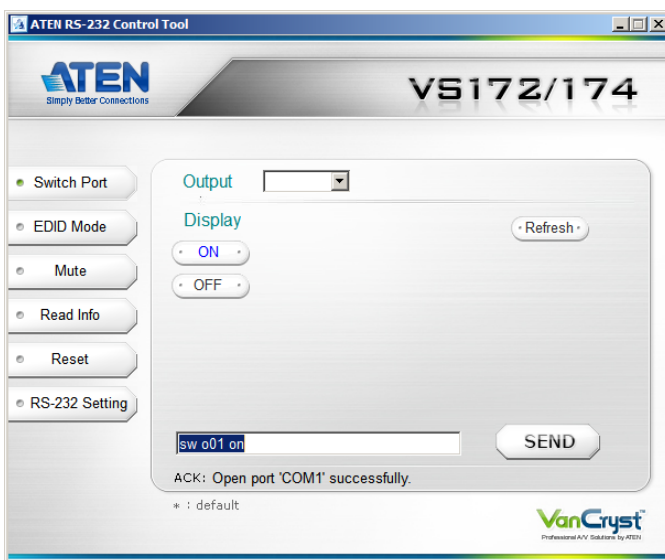


VS172 / VS174
2/4-Port DVI Dual Link Splitter with Audio
RS-232 Control Tool
User Manual



FCC Information

This is an FCC Class A product. In a domestic environment this product may cause radio interference in which case the user may be required to take adequate measures.

This equipment has been tested and found to comply with the limits for a Class A digital device, pursuant to Part 15 of the FCC Rules. These limits are designed to provide reasonable protection against harmful interference when the equipment is operated in a commercial environment. This equipment generates, uses and can radiate radio frequency energy and, if not installed and used in accordance with the instruction manual, may cause harmful interference to radio communications. Operation of this equipment in a residential area is likely to cause harmful interference in which case the user will be required to correct the interference at his own expense.

RoHS

This product is RoHS compliant.

Safety

This product has been classified as Information Technology Equipment.

SJ/T 11364-2006

The following contains information that relates to China.

部件名称	有毒有害物质或元素					
	铅	汞	镉	六价铬	多溴联苯	多溴二苯醚
电器部件	●	○	○	○	○	○
机构部件	○	○	○	○	○	○

- : 表示该有毒有害物质在该部件所有均质材料中的含量均在SJ/T 11363-2006规定的限量要求之下。
- : 表示符合欧盟的豁免条款, 但该有毒有害物质至少在该部件的某一均质材料中的含量超出SJ/T 11363-2006的限量要求。
- ×: 表示该有毒有害物质至少在该部件的某一均质材料中的含量超出SJ/T 11363-2006的限量要求。



RS-232 Control Tool Operation

Overview

The VS172 / VS174 2/4-Port DVI Dual Link Splitter with Audio has a built-in bi-directional RS-232 serial interface that allows system control through a high-end controller, PC, and/or home automation / home theater software package. RS-232 serial operations in a VS172 / VS174 installation can be managed via a Graphical User Interface (GUI) on systems that are running Windows. In order to use this Control Tool, two separate items of software must be installed on all of the PCs in your installation – .NET Framework 2.0 and the Control Tool AP. This procedure is detailed in the following sections.

Before You Begin

.NET Framework 2.0

To install .NET Framework on your PC, do the following:

1. Download the executable file from the Microsoft Download Center online, and run it.
2. Follow the instructions on the screen. The installation applet will automatically detect the operating system and install the correct drivers

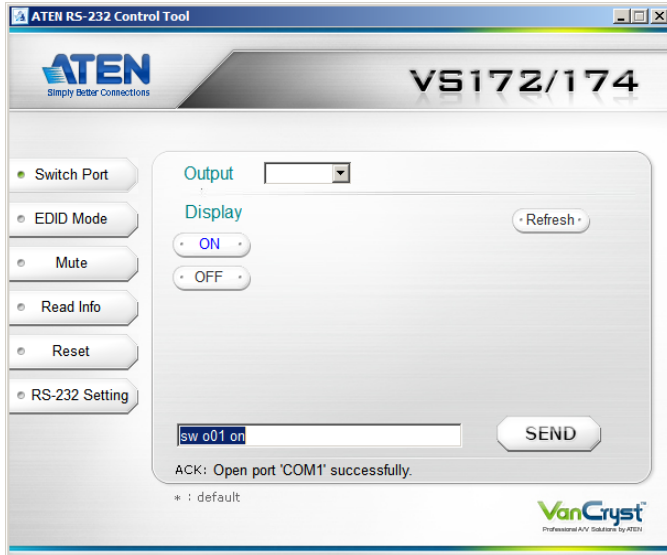
RS-232 Control Tool AP

To download the RS-232 Control AP in order to use the Browser GUI to manage the serial commands in your VS172 / VS174 installation, do the following:

1. Download the RS-232 Control Tool AP from the ATEN website (www.aten.com).
2. Save the file to a convenient location.
3. Run the file to open the RS-232 Control Tool GUI.

GUI Main Page

The RS232 Control Tool is a convenient and intuitive method to manage the RS-232 commands in your VS172 / VS174 installation from one screen. To invoke the GUI, simply click on the icon in your file system. The interface appears, and opens on the Switch Port page by default, as below:



The various elements of the GUI are described in the following sections.

Switch Port



On the *Switch Port* page, the following actions are possible:

- ◆ Select the **Output** port from the drop-down menu (options are Ports 1–4 and default *). Additional drop-down menus are added for every cascaded unit (up to three).
- ◆ Turn the **Display** On or Off.
- ◆ Click **Refresh** to detect the connection or additional cascaded units.

Note: The RS-232 Control AP automatically detects the number of cascaded units.

- ◆ Click **Send** to send the command.

Switch Port Commands

These actions can also be performed by keying the command into the text box, and clicking **Send**.

The formula for Switch Port commands are as follows:

Switch Command + Output + Port + Control [Enter]

For example, to switch output port to port 02, type the following:

sw o02 on [Enter]

The following tables show the possible values and formats for the **Output** command, **Port** number and **Control**:

Command	Description
sw	Switch command

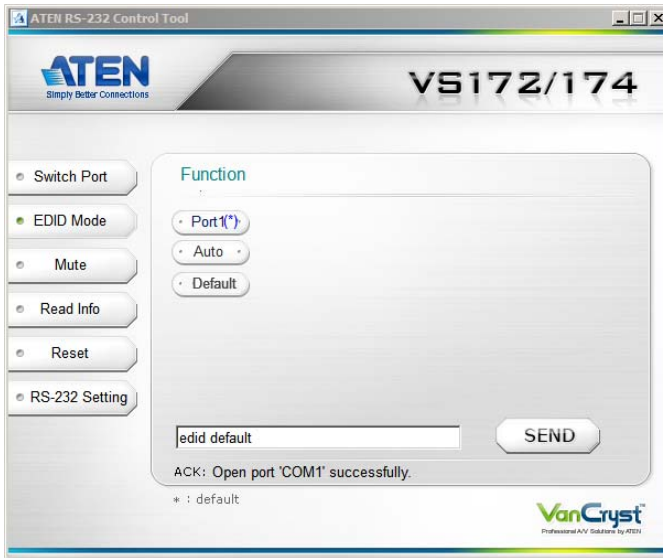
Output	Description
o	Output command

Port	Description
yy	01-04 port (default is 01)
*	All output ports

Control	Description
on	Turn on the VS172 / VS174
off	Turn off the VS172 / VS174

Note: Each command string can be separated with a space. The Port command string can be skipped and the default value will be used.

EDID Mode



On the *EDID Mode* page, the following actions are possible:

- ◆ Click on **Port 1(*)** to implement the EDID of the connected display to Port 1, and pass it to the video source (default).
- ◆ Click **Auto** to implement the EDID of all connected displays. The VS172 / VS174 uses the best resolution for all displays.
- ◆ Click **Default** to implement ATEN's default EDID.
- ◆ Click **Send** to send the command.

Extended Display Identification Data (EDID) is a data format that contains a display's basic information and is used to communicate with the video source/system. You can set up which EDID mode the VS172 / VS174 uses with the following command:

EDID Command + Control (port1 / auto / default) [Enter]

The EDID commands work only for the first stage unit when cascading VS172 / VS174 units.

Mute



On the *Mute* page, the following actions are possible:

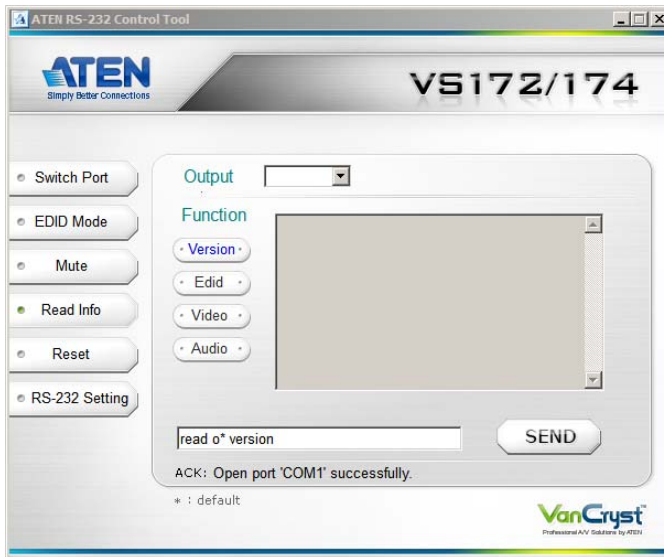
- ◆ Select an **Output** port from the drop-down menu.
- ◆ Click **ON** to mute the selected port.
- ◆ Click **OFF** to enable the audio of the selected port.
- ◆ Click **Send** to send the command.

Mute Command

Enable or disable audio coming from the output port(s) using the following command:

Mute Command + Output + Port + Control (On / Off) [Enter]

Read Info



On the *Read Info* page, the following actions are possible:

- ◆ Select an **Output** from the drop-down menu.
- ◆ Click **Version** to view the current firmware version.
- ◆ Click **EDID** to see which EDID setting is implemented to device 01.
- ◆ Click **Video** to view the video status (on /off).
- ◆ Click **Audio** to view the audio status (on / off).
- ◆ Click **Send** to send the command.

Read Command

View information from the device using the following command:

Read Command + Port + Control (version / edid / video / audio) [Enter]

Reset



On the *Reset* page, the following actions are possible:

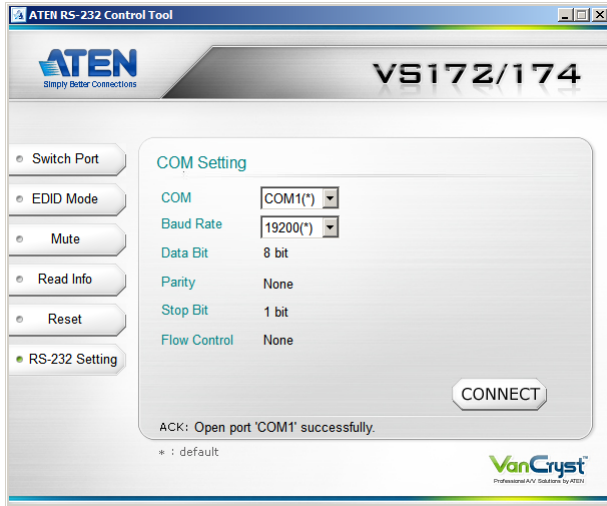
- ◆ Select an **Output** port from the drop-down menu.
- ◆ Click **Reset** to reset the VS172 / VS174 to default factory settings.
- ◆ Click **Send** to send the command.

Reset Command

The formula for the Reset command is as follows:

Reset Command + Output + Port [Enter]

RS-232 Setting



The controller's serial port should be configured as follows:

Baud Rate	19200
Data Bits	8
Parity	None
Stop Bits	1
Flow Control	None

To select the serial port, do the following:

- ◆ Select the port and baud rate from the drop-down menus and click **CONNECT**.

Verification

After entering a command, a verification message appears at the end of the command line as follows:

- ◆ **command OK** - indicates that the command is correct and successfully performed by the switch.
- ◆ **command incorrect** - indicates that the command has the wrong format and/or values.

This Page Intentionally Left Blank